

NUMBER OF PARTNER:	P3 Cesmar7, P4 An.t.a.res srl
TYPE OF WORK:	Mural painting
COUNTRY:	Italy
CITY:	Milan
ADDRESS:	Via Giulio Cesare Procaccini, 4
OWNER / CUSTODIAN:	Fabbrica del Vapore, Municipality of Milan
ARTIST:	Ivan, Nais, Orticanoodles, Pao
TITLE OF THE WORK:	Tribute to Kahled al Asaad
YEAR OF EXECUTION:	2016
MATERIALS:	Housepaint acrylic (Sikkens) and spray (Montana)

	Name of the sample	Original materials	No original materials	Pigments / dyes		Organic binders		Type of support*		Other**	
				Identification methods	Results	Identification methods	Results	Identification methods	Results	Identification methods	Results
1	1 K	X								Stereomicroscopy	Stratigraphy: a.Plaster of the support; b.Light brown-grey ground layer; c.Yellow primer; d.Bordeaux-dark violet paint layer e.Thick pink paint layer; f.Bordeaux-dark violet paint layer

2	2 K	X								Stereomicroscopy	Stratigraphy: a.Plaster of the support; b.Light brown-grey ground layer; c.Yellow primer; d.Yellow paint layer ;
3	3 K	X								Stereomicroscopy	Stratigraphy: a.Plaster of the support; b.Thin light brown-grey ground layer; c.Yellow primer; d.Bicolor grey paint layer with crack and lacuna
4	4 K	X								Stereomicroscope	Stratigraphy: a.Plaster of the support; b.Light brown-grey ground layer; c.Yellow paint layer (prime coating); d.Matt pink-brownish paint layer with crack.

* mortars, stone, metal ect.

** Additional research or analyzes, for example: aging tests, colorimetry, pH...

Sample 1 K was collected from a bordeaux paint layer applied by brush (**fig.1**) along an outline.

The study of the 1K sample has shown the following structure (**fig.2**):

- a)** Plaster of the support;
- b)** Light brown-grey ground layer;
- a)** Yellow paint layer (prime coating);

- c)* Bordeaux-dark violet paint layer;f
- d)* Thick pink paint layer;
- e)* Bordeaux-dark violet, gloss and not porous, paint layer with superficial white stains. It seems the same *g* layer.

Sample 2 K was collected from a yellow paint layer applied by spray (**fig.1**).

The study of the 2K sample has shown the following structure (**fig.3**):

- a)* Plaster of the support;
- b)* Light brown-grey ground layer;
- c)* Yellow paint layer (prime coating);
- d)* Yellow paint layer with crack and other dark particles.

Sample 3 K was collected from a grey dark/light paint layer maybe applied by brush (**fig.1**).

The study of the 3K sample has shown the following structure (**fig.4**):

- a)* Plaster of the support;
- b)* Thin light brown-grey ground layer;
- c)* Yellow paint layer (prime coating);
- d)* Bicolor grey paint layer with crack and lacunae.

Sample 4 K was collected from a brown paint layer (**fig.1**).

The study of the 4K sample has shown the following structure (**fig.5**):

- a)* Plaster of the support;
- b)* Light brown-grey ground layer;
- c)* Yellow paint layer (prime coating);
- d)* Matt pink-brownish paint layer with crack.



Fig. 1 “ Omaggio a Kahled al Asaad ” side K sampling

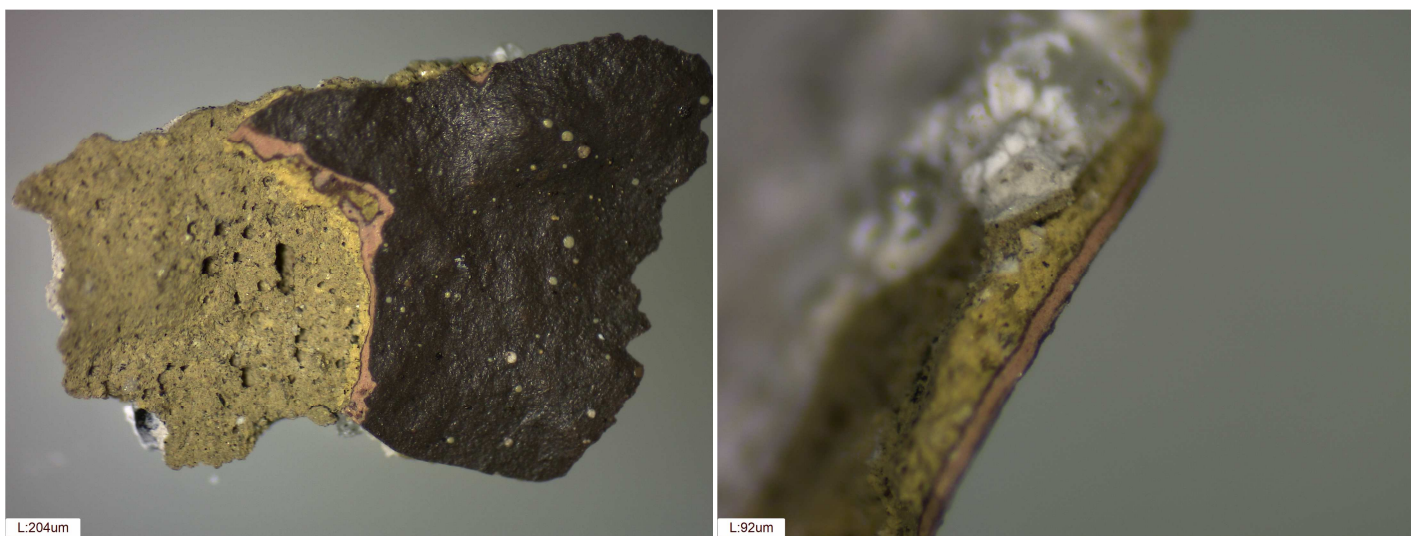


Fig.2 “Ubuntu” – sample 1 K – reflected Visible light -SM- magnification 20x (left) and 45 x (right)

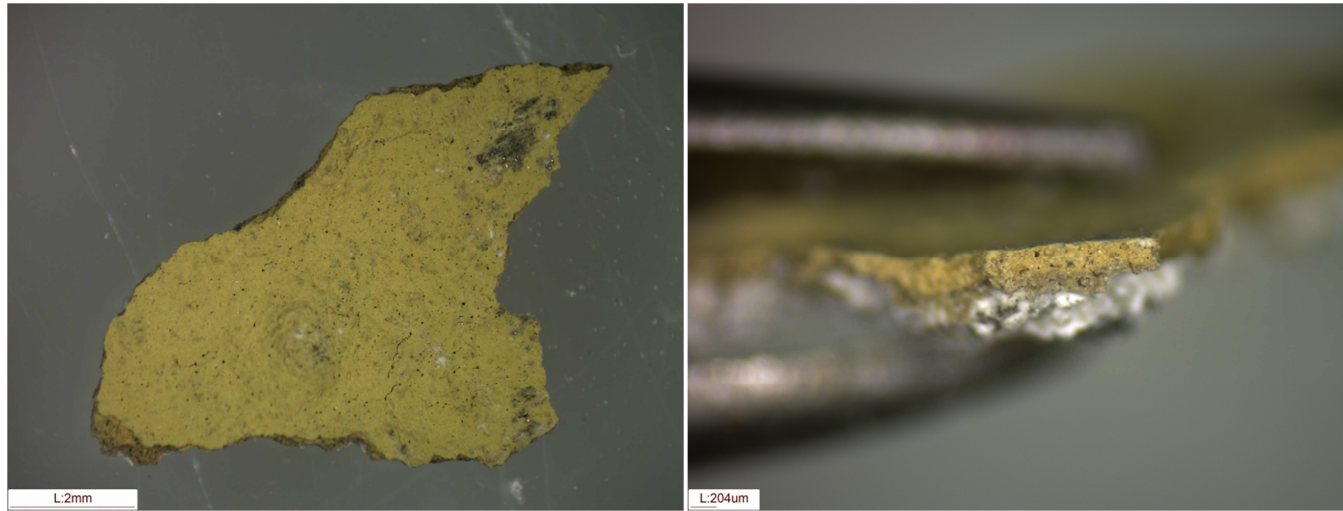


Fig.3 “Ubuntu” – sample 2 K – reflected Visible light –SM- magnification 10x (left) and 20 x (right)

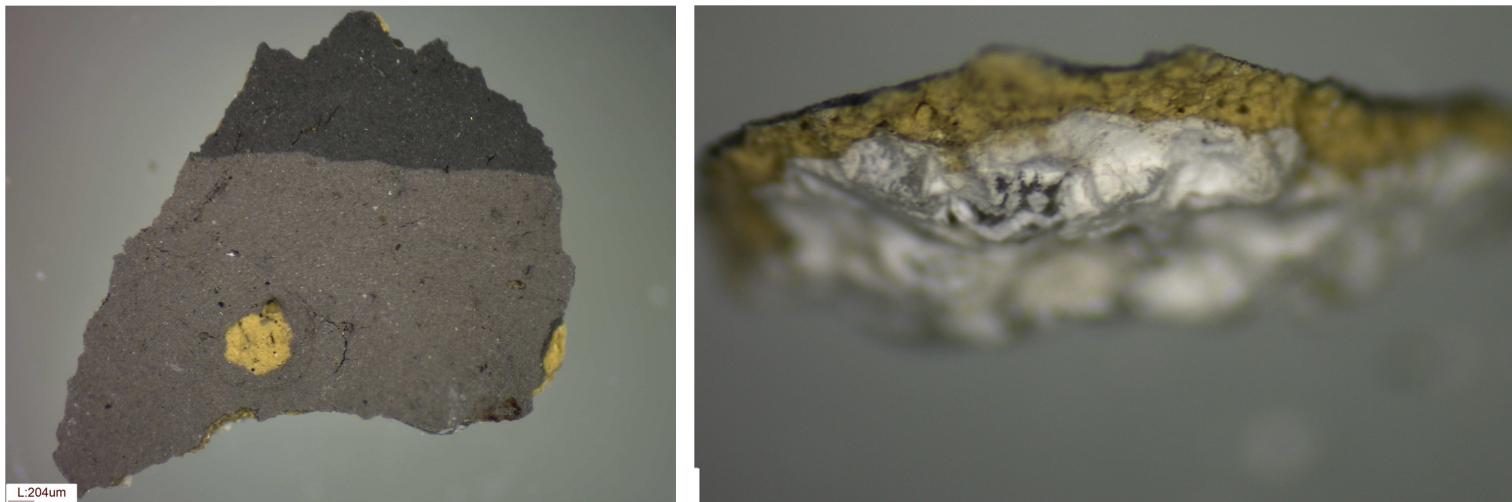


Fig.4 “Ubuntu” – sample 3 K – reflected Visible light –SM- magnification 20x

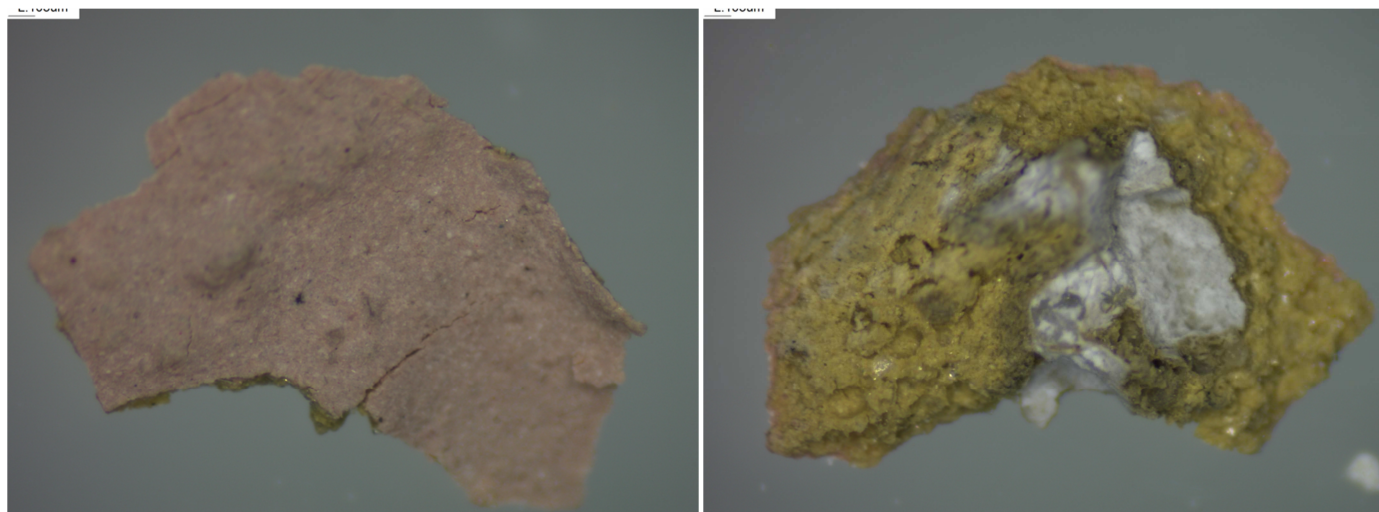


Fig.5 “Ubuntu” – sample 4 K – reflected Visible light –SM- magnification 40x

This document was produced within the project *Conservation of Art in Public Spaces (CAPuS)*.

Authors:

AN.T.A.RES srl (ITALY)

CESMAR7 (ITALY)

UNITO (ITALY)



Education, Audiovisual and
Culture Executive Agency
Erasmus+: Higher Education-Knowledge
Alliances, Bologna Support, Jean Monnet

CAPuS project has received funding from the
European Commission, Programme Erasmus+
Knowledge Alliances 2017, Project N°

The European Commission's support for the production of this publication does not constitute an endorsement of the contents, which reflect the views only of the authors, and the Commission cannot be held responsible for any use which may be made of the information contained therein.